

LIERRENSE



WHY LIERRENSE?

Elegant Fusion of Global Artistry in Wall Solutions is our inspiration.

At Lierrense, we offer solutions to your design ideas. Our wall collection showcases a blend of art influences from different corners of the world to satisfy different tastes. With our products designed and developed in California, each piece is crafted for visual appeal and durability, enhancing any space with a touch of elegance.

Our mission at Lierrense is to revolutionize the way wall coverings are produced and installed, providing innovative and customizable solutions that enhance any space. We aim to deliver high-quality, cost-effective, and aesthetically pleasing wall panel solutions that cater to the unique needs and preferences of our clients.

Our vision is to use science and technology to represent a forward-thinking approach to wall design, offering a combination of environmental-friendly, ease of use, and health-conscious features that are set to revolutionize interior spaces for years to come.

TERME'H

TERME'H, represents a pinnacle of craftsmanship, crafted from top-tier fabric and dense PU foam, meticulously chosen for their quality and durability. Unlike traditional panels, ours require no cumbersome backboards or messy glues, simplifying installation and enabling easy customization with a simple utility knife. This lightweight design not only facilitates handling but also ensures effortless installation, saving both time and effort.

Furthermore, our panel boasts exceptional durability, capable of withstanding the rigors of daily use while maintaining its pristine appearance for years to come. Its fire-retardant properties offer peace of mind, enhancing safety in any environment, while its zero formaldehyde emissions align with environmental sustainability standards.

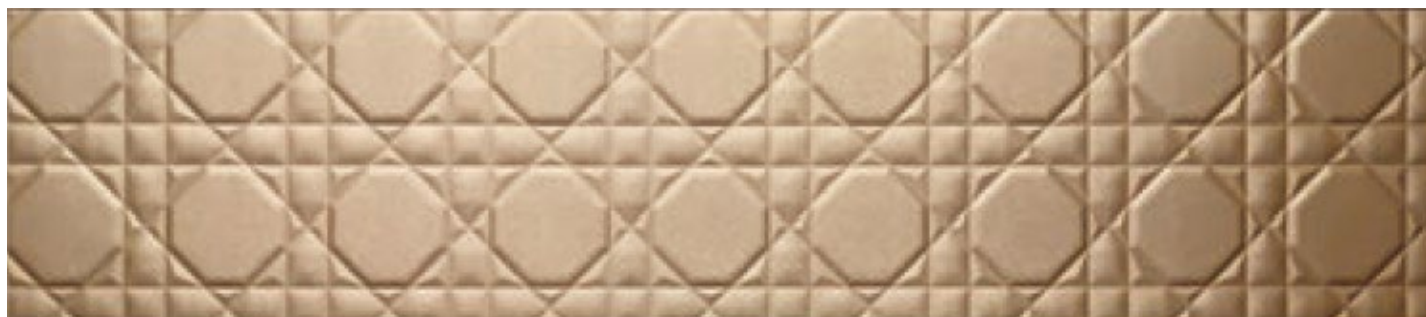
Designed for versatility, our panel finds its place in various interior applications, from accent walls to ceiling treatments, effortlessly enhancing the aesthetic appeal of any space. Moreover, its synthetic leather backside serves a dual purpose by not only preventing moisture buildup but also adding an extra layer of refinement to the overall design to act as an acoustic layer, enhancing sound quality for a more immersive experience.

In essence, our panel epitomizes the fusion of innovation and tradition, offering a sophisticated solution that marries modern functionality with timeless craftsmanship.



Name : Dior Plus

Panel Size: 600 x 2950mm | Thickness 7mm





Name : Thousand Miles

Panel Size: 600 x 2950mm | Thickness 5mm



Name : Dior Love

Panel Size: 600 x 2950mm | Thickness 6mm





Name : DNA II

Panel Size: 600 x 2950mm | Thickness 5mm



Name : Harvest

Panel Size: 600 x 2950mm | Thickness 5.5mm





Name : Jade Palace

Panel Size: 600 x 2950mm | Thickness 5.5mm



Name : Victoria

Panel Size: 600 x 2950mm | Thickness 7mm

300 x 2950mm | Thickness 7mm



Name : Excel

Panel Size: 600 x 2950mm | Thickness 15mm



Name : Ditto

Panel Size: 600 x 2950mm | Thickness 15mm



Name : Mars Era

Panel Size: 600 x 2950mm | Thickness 25mm



Name : Domingo

Panel Size: 600 x 2950mm | Thickness 18mm



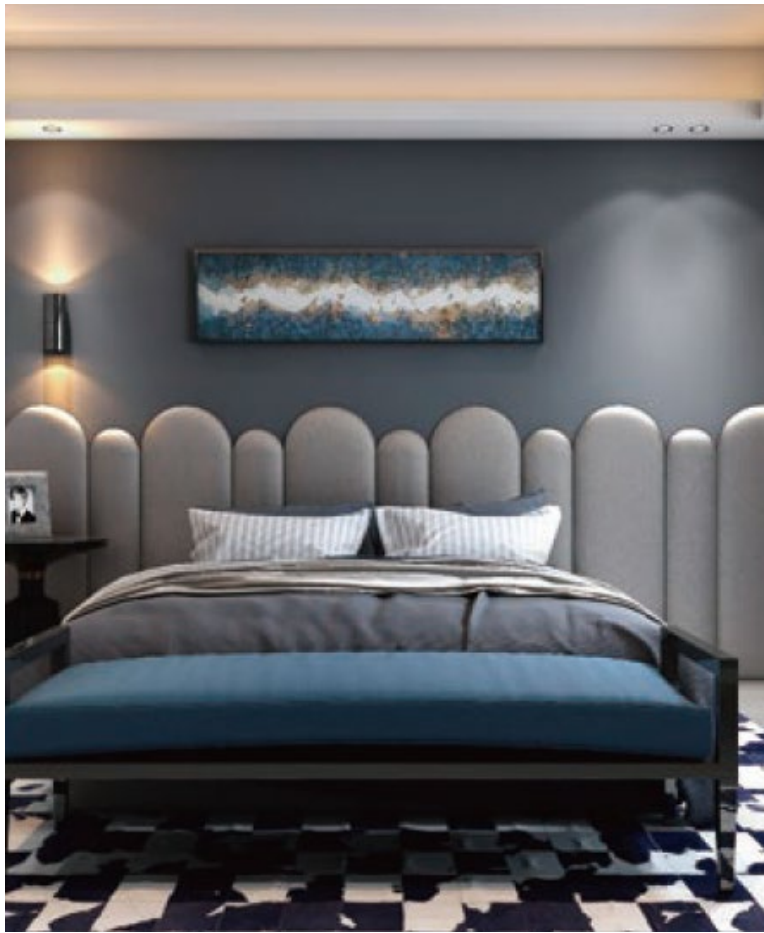
Name : Baguette

Panel Size: 550 x 2950mm | Thickness 55mm



Name : Aurora

Panel Size: 500 x 2950mm | Thickness 22mm



Name : Hamburg

Panel Size: 400 x 1200mm | Thickness 35mm

200 x 1100mm | Thickness 25mm

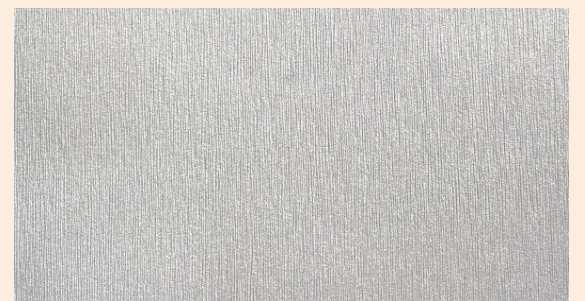
Leather Collection and Available Colors



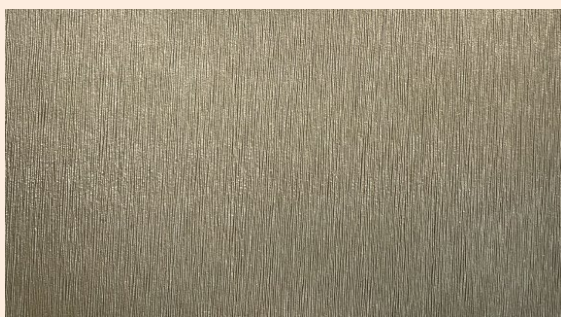
HS-010 Matt Light Gold



HS-012 Matt Pure White



HS-019 Matt Silver



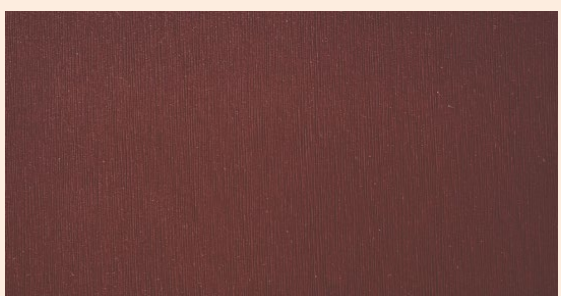
HS-013 Matt Beige



HS-015 Pure Gold



HS-017 Matt Black



HS-011 Matt Wine Red



HS-016 Matt Bronze

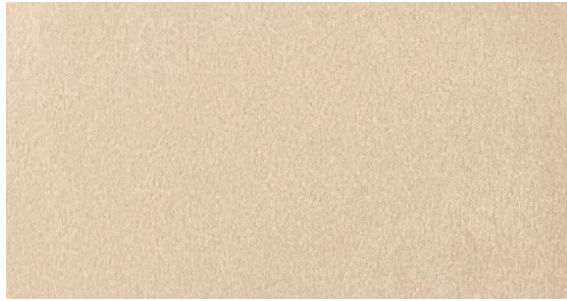


HS-018 Matt Porcini Red

Suede Collection and Available Colors



V-809 Suede Navy



V-820 Suede Pastel Yellow



V-816 Suede Dark Brown



V-812 Suede Cream White



V-804 Suede Beige



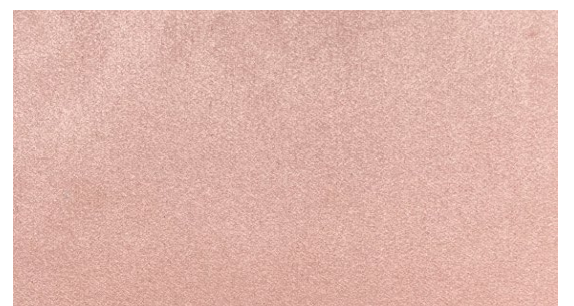
V-820 Suede Starlight Blue



V-812 Suede Oyster Grey



V-821 Suede Nile Green



V-802 Suede Flesh Pink



V-041 Suede Brown Slate



V-041 Suede Pure Gold

Product Specification:

Product material: Premium-quality acoustic fabric with a sound absorbing core

Composition: The base comprises soft, high-density memory foam, while the surface boasts either synthetic leather or suede fabric, layered with a protective coating. Additionally, the back features synthetic leather, enhancing durability and preventing moisture transfer from the wall.

Dimension: Refer to e-catalog for available sizes for each model

Thickness: Ranges from 0.2 inches (5 mm) - 2 inches (55 mm), offering different levels of sound absorption

Color Options: Wide selection of colors. Color swatches can be shared upon request along with samples

Durability:

Fade Resistant: UV-resistant fabric ensures long-lasting color vibrancy

Scratch Resistant: Durable outer layer prevents scratches and abrasions

Fire-rated (US): Meets fire safety standards for commercial and residential settings (Class A)

Impact-resistant: Inner core materials are designed to withstand impacts without losing shape

Care Instructions:

Spot Cleaning: Use a damp cloth with mild detergent for localized stains

Vacuum Friendly: Gently vacuum to remove dust and maintain appearance

Attributes:

Paste the wall with any good quality adhesive

Dry Peelable for secondary use

Free Match

Good Lightfastness

